

Developed by

SIDDHA
Kolkata | Jaipur | Mumbai | Bangalore



Corporate Office
Siddhu Park, 99A Park Street
Kolkata 700046, India
P: +91 33 4700-4700
E: info@siddhagroup.com
W: siddhagroup.com

Site
Ragachi-Bamala, Rajarhat Main Road
Kolkata 700135, India
E: galaxia@siddhagroup.com
W: siddhagalaxia.com

Preferred Marketing Partner



Corporate Office
2N/52 PS Srijan Tech Park
Floor 9, Sector V, Salt Lake
Kolkata 700091, India
P: +91 33 4040 1510 / 5620 1010
E: sales@nkassociates.com



All information, features and offerings in this brochure are subject to change without notice. Photographs used in this brochure are artist impressions and are for illustration purposes only and may not bear resemblance to actual features/offerings. This brochure is not a legal offer or document.

ZRICKS

Dazzling to delight you.



WWW.ZRICKS.COM



ZRICKS

Where the azure sky embraces the lush open greens. Where the immaculately designed facilities embrace the plush amenities. Where living is just sheer ecstasy. That's Siddha Galaxy.

Just like a galaxy comprising stars, planets and other heavenly bodies make up an eternal life cycle system... Siddha Galaxy too is a vast expanse of ultimate delights with a happy communion of over 10,000 people.

Come, live a heavenly life...
In a galaxy.



Recess and Club Stella, Day View



Rooftop Starwalk and Club Stella, Day View

A constellation of sophistication, comfort and peace

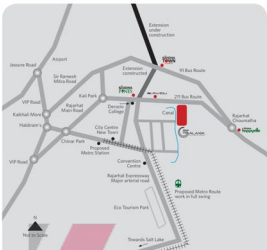
With sprawling greens, Siddha Galaxia offers you more than a cluster of towers. A holistic environment with many thoughtful features. It will eventually house more than 2500 flats.

With state-of-the-art amenities, easy connectivity and a convenient location, Siddha Galaxia is heaven sent.

Reach for the stars

With serene surroundings and safe neighbourhood, Siddha Galaxia is the most sought after destination of Rajarhat that offers harmonious living.

Siddha Galaxia is conveniently located on the Rajarhat Main Road with expressway extension only 2 kms away and the airport is just 5 kms from here. The accessible location helps you stay connected with Salt Lake Sector V and New Towns.





Towers with Landscapes, Day View

ZRICKS



Phase 1 Towers

The first star of the Galaxy

The inception of Siddha Galaxia began with Siddha Sphere...6 towers with 347 apartments and star-studded features that promised an elevated lifestyle.

A galaxy full of amenities were added to it with a 40,000+ sq ft world-class residents' club.

Siddha Sphere, a completed phase, is a part of Siddha Galaxia that will eventually house more than 2500 families.

If you're looking for more space to unfold your dreams, Siddha Galaxia will surely help you to step into a galaxy of infinitely dazzling luxury.



Rooftop Starwalk, Day View

The orbit of life's pleasures

The Starwalk at Sidha Galaxia, like an orbit, connects the towers and offers ample greenery with jogging tracks and sufficient space for you to start every day afresh.

A gripping view to cherish you every morning, a place to soak in Nature's beauty or unwind after a hard day's work and even gaze at the starry night, something only Sidha Galaxia can offer.



Roofline on Rooftop Starwalk

Star-studded **Club Stella**

The luxury club at Sidha Galaxia can captivate your core with a host of enthralling facilities.

ZRICKS A TRISTAR PROJECT



Club Stella, Twilight View



Floater's - Swimming Pool

ZRICKS



Rackets' Arena - Squash Court



Fitness Club - Gymnasium

The building is multi-layered with lounge facilities on all floors, and an exclusive hall and a party lawn that will surely be a party lover's paradise.

Get pampered to your core at the spa, steam and massage room or let your fitness streak loose at the health zone and gymnasium.

Floater's at Sidha Galaxia offers you a cool retreat with each refreshing dip. Plus there's an Aqua Aerobics facility too.

As you unwind at the badminton or squash court, or tennis court on multi-level car park... watch your children play at Child's Play, the crèche and toddlers' zone.

And make most of your weekends at Miscellany, the multi-activity room... dance, draw, cook or play music. A starry affair awaits you.

Other Club facilities

- Bookery - Library cum Lounge
- Players' Point - Indoor Games Room
- Fusion Cafe - Coffee Shop with WiFi
- Child's Play - Crèche and Toddlers' Zone
- Reggae - The AC Banquet Hall
- Karma Corner - Yoga and Meditation Zone



Players' Point - Indoor Games Room



Towers and Club Bldg, Twilight View

The greener side of the galaxy

Enjoy the pristine beauty of Nature at Siddha Galaxy.

Whether you stroll across the landscaped greens with scenic pathways or jog on Runtime ... both on the Starwalk, the friendly vibe of the lush greens is sure to leave you spellbound.

There's Sunnyside, a beautiful sundeck too for you to enjoy a nice conversation or rejuvenate your soul.

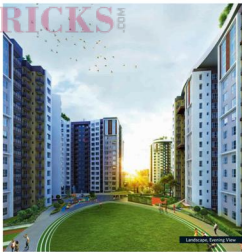
Special feature

- Rooftop Starwalk

A galaxy of amenities

- Runtime - Joggers' Track (on Rooftop Starwalk)
- Landscaped Garden on Starwalk
- Sunnyside - Sundeck
- Feel Good Room - Spa, Steam and Massage Room
- Karma Corner - Yoga and Meditation Zone
- Health Zone
- Fitness Club - Gymnasium
- Ploaters - Swimming Pool
- Aqua Aerobics
- Love Zone - Badminton Court
- Break Point - Tennis Court on MSCP
- Rackets' Arena - Squash Court
- Miscellany - Multiactivity Room
- Bookery - Library cum Lounge
- Players' Point - Indoor Games Room
- Fusion Cafe - Coffee Shop with WiFi
- Child's Play - Crèche and Toddler's Zone
- Regale - The AC Banquet Hall

ZRICKS .COM



Landscapes, Evening View



Landscape, Night View

A galaxy full of conveniences

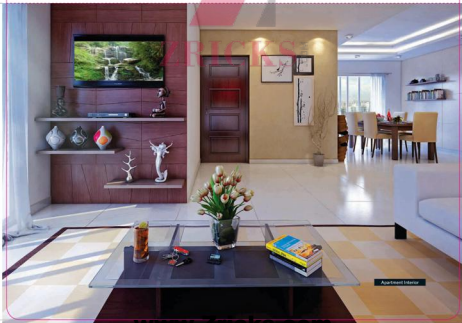
Saha Galaxy is sure to cater to your every need.

Facilities and conveniences

- Advanced fire-fighting system
- Door phones and intercom
- Sewage treatment plant
- Rainwater harvesting system
- Power backup for common areas
- 24x7 water supply
- 24x7 security and surveillance system
- Elevators and stretcher elevators

Provisions

- Cable TV and broadband points
- Fresh fruits and vegetables vending area
- ATM
- Milk supply
- Salon
- Concreto
- Sole power for common areas
- Facility office
- Visitors' car park
- Staff for support and maintenance staff
- Doctor and ambulance on call



Apartment Interior



Specifications

Structure

Sub Structure Earthquake resistant RCC framed structure with monolithic concrete

Door

Shutter Solid core timber frames
Frame Solid wooden flush shutters

Hardware

Mortice lock and handle

Window

Anodized powder coated aluminium frames with fully glazed shutters

Flooring & Tiling

Internal

Bedroom Vitrified tiles
Living/ Dining Vitrified tiles
Toilet Floor Anti-skid ceramic tiles
Toilet Wall Ceramic tiles
Kitchen Floor Anti-skid ceramic tiles
Kitchen Dado Ceramic tiles
Kitchen Counter Granite above chulappa stone
Balcony Vitrified tiles/ Anti-skid ceramic tiles
Lobby Vitrified tiles/ Ceramic tiles
Lift Facia Marble/ Granite/ Laminate

External

Driveway/ Basement/ Covered car parking/
Open car parking/ Courtyard
Paver block/ Stamp concrete/ Kota/ Granite/
Grass paver/ VDF (Valium Devalined Flooring)

Staircase

Marble/ Kota/ Granite/ Cementitious tiles/
Ceramic tiles

Sanitaryware

Chromium plated fittings/ High quality porcelain fixtures

Electricals

Superior quality concealed copper (fire resistant, low smoke) wiring, Latest modular switches and miniature circuit breakers, TV socket and broadband point

Exterior

Latest weatherproof exterior finish





ZRICKS COM

Green homes for you
and the environment



Planned and designed according to 'Green Homes' norms of IGBC's 'Silver Rating System'.

Siddha Galaxia is registered as a 'Green Homes' project by the Indian Green Building Council (IGBC). 'Green Homes' is the first rating programme developed in India, exclusively for the residential sector.



Green Benefits



Reduced energy usage and costs



Reduced water usage through low flow fixtures



Sewage treatment, dual plumbing and water recycling



Rainwater harvesting system and grid pavers to recharge the natural water reservoirs



Use of recycled materials such as fly ash in cement and brickwork



Native and drought-tolerant species planted in the landscape



Periodic indoor air quality audits conducted during the construction phase



Improved indoor air quality through the usage of low-VOC paints, adhesives and eco-friendly chemicals



High window-to-wall ratio, guaranteeing better views and cross ventilation



Waste management and recycling set up in place



Reduced greenhouse gas emission and carbon footprint

ZRICKS SIDDHA .COM

Siddha believes a house is not mere bricks and mortar. Nor is it a place where you live, simply enclosed within four walls. Siddha believes that a home is a special place, which helps you discover the real you. And your home is your life's focal point, beckoning you time and again.

Since its inception in 1986, Siddha has created homes and workspaces with a difference, in order to make good living affordable in Kolkata, Jaipur, Mumbai and Bengaluru.

Siddha's perseverance and passion for quality homes drive it forward with every new project. Led by Group Chairman Chandra Prakash Jain and Group Managing Director Sanjay Jain, Siddha creates and sells high-quality housing in India.

By combining upmarket design, superior materials and excellence in construction, Siddha delivers comfortable homes at convenient prices. Within committed time frames of course.

To know more about Siddha Group, refer to the Siddha Corporate Booklet which is a part of this Kit.

SRISA

Risa Group is a prominent business house with a number of real estate projects in and around Kolkata.

Architect



Agrawal & Agrawal, led by Jay Prakash Agrawal, the renowned architect, ranks amongst Eastern India's leading architectural practitioners. It is known for its residential apartments, commercial complexes, townships, IT infrastructure, complexes, malls, hotels, institutional and leisure projects.

Legal Advisor



Saha & Ray, Advocates, Kolkata, is a premier law firm specialising in real estate and property laws. Armed with international affiliations and global firms of reference, the firm is headed by Avik Saha and Jayati Ray.